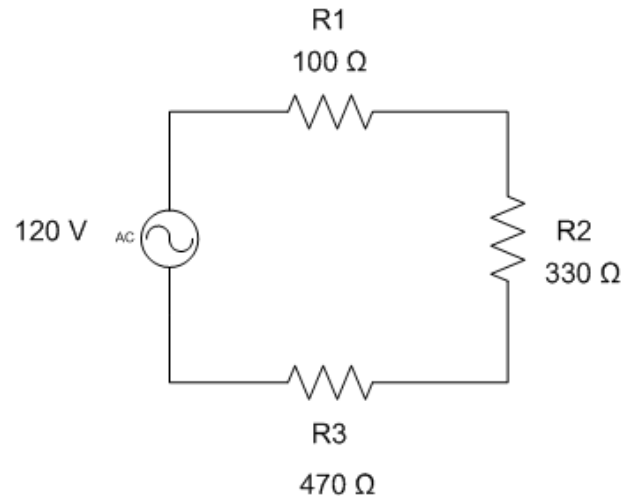


Resistive Circuit Ex #2 ~ Answers

April-08-13



Source	Resistor 1	Resistor 2	Resistor 3
$V_T = 120\text{ V}_{AC}$	$V_{R1} = 13.3\text{ V}$	$V_{R2} = 43.89\text{ V}$	$V_{R3} = 62.51\text{ V}$
$I_T = 0.133\text{ A}$	$I_{R1} = 0.133\text{ A}$	$I_{R2} = 0.133\text{ A}$	$I_{R3} = 0.133\text{ A}$
$R_T = 900\text{ Ω}$	$R_1 = 100\text{ Ω}$	$R_2 = 330\text{ Ω}$	$R_3 = 470\text{ Ω}$
$P_T = 15.96\text{ W}$	$P_{R1} = 1.77\text{ W}$	$P_{R2} = 5.84\text{ W}$	$P_{R3} = 8.31\text{ W}$

Talk about difference due to rounding

⊗ EVEN DIFFERENT CALCULATORS WILL VARY THE ANSWERS GIVEN.